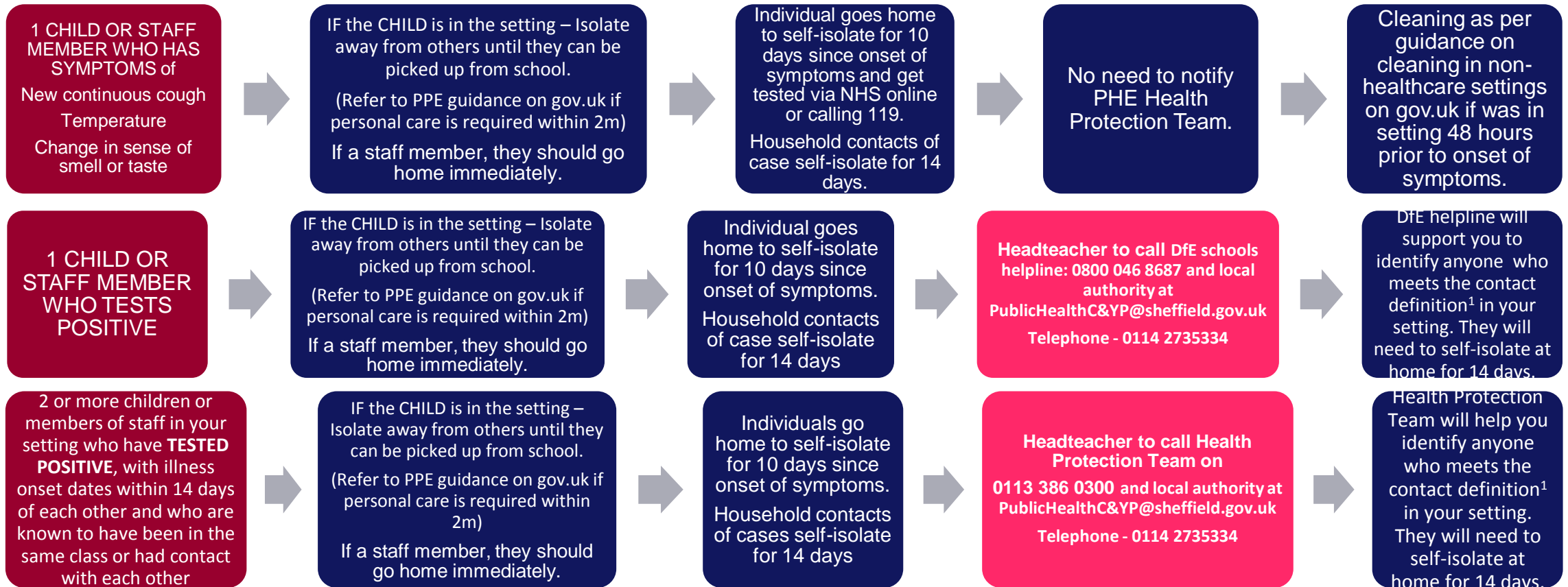




What to do if you have a case of COVID-19 in your school

See your School Pack for more information. Guidance is available at: <https://www.gov.uk/coronavirus/education-and-childcare>



Underpinned by control measures to reduce risk: minimising contact with those who are unwell, handwashing, respiratory hygiene, cleaning, minimising mixing and contact by altering the environment and daily schedules.

¹Contact definitions: <https://www.gov.uk/government/publications/guidance-for-contacts-of-people-with-possible-or-confirmed-coronavirus-covid-19-infection-who-do-not-live-with-the-person/>